

# Kula Gold Limited Corporate Presentation

8 March 2024

[www.kulagold.com.au](http://www.kulagold.com.au)

# DISCLAIMER, COMPETENT PERSON AND REFERENCES

## Cautionary Statement:

### Forward Looking Statement:

This Presentation may include statements that could be deemed “forward-looking statements”. Although Kula Gold Limited (the Company) believes the expectations expressed in such forward-looking statements are based on reasonable assumptions, such statements are no guarantee of future performance and actual results or developments may differ materially from those expected in the forward-looking statements or not take place at all.

This Presentation is not, and should not be considered to, constitute any offer to sell, or solicitation of an offer to buy, any securities in the Company, and no part of this Presentation forms the basis of any contract or commitment whatsoever with any person. The Company does not accept any liability to any person in relation to the distribution or possession of this Presentation from or in any jurisdiction.

## Disclaimer

Whilst care has been exercised in preparing and presenting this Presentation, to the maximum extent permitted by law, the Company and its representatives:

- make no representation, warranty or undertaking, express or implied, as to the adequacy, accuracy, completeness or reasonableness of this Presentation;
- accept no responsibility or liability as to the adequacy, accuracy, completeness or reasonableness of this Presentation; and
- accept no responsibility for any errors or omissions from this Presentation.

The Company confirms that it is not aware of any new information or data that materially affects the information included in the original market announcements and that all material assumptions and technical parameters underpinning the estimates in the relevant market announcements continue to apply and have not materially changed. The company confirms that the form and context in which the Competent Person’s findings are presented have not been materially modified from the original market announcements.

## Competent Person Statements

The information in this report that relates to geology and exploration is based on information compiled by Mr. Ric Dawson, a Competent Person who is a member of the Australian Institute of Mining and Metallurgy. Mr. Dawson is a Geology and Exploration Consultant who has been engaged by Kula Gold Limited. Mr. Dawson has sufficient experience, which is relevant to the style of mineralisation, geology and type of deposit under consideration and to the activity being undertaken to qualify as a competent person under the 2012 edition of the Australasian Code for Reporting Exploration Results, Mineral Resources and Ore Reserves (the 2012 JORC Code). Mr. Dawson consents to the inclusion in the report of the matters based on his information in the form and context in which it appears.

## References:

- [Kula Gold ASX release 28 June 2023](#) - Rankin Dome JV - Advance To Drill REE Targets
- [Kula Gold ASX release 1 February 2024](#) - Kirup Exploration Update
- [Kula Gold ASX release 8 February 2024](#) - Marvel Lock Exploration Update
- [Kula Gold ASX release 22 February 2024](#) - Marvel Loch Exploration Update - Boomerang Gold

# Capital Structure

Shares on issue:

462,661,921 Fully paid shares (ASX:KGD)  
10,750,000 Fully paid shares (ASX:KGD)\*  
473,211,921 Fully paid shares (ASX:KGD)

8,350,000 Unlisted options \$0.06, expiry 1 July 2026  
575,000 Unlisted options \$0.085, expiry 1 August 2025  
6,000,000 Unlisted options \$0.08, expiry 1 November 2025  
5,000,000 Unlisted options \$0.02, expiry 1 July 2026  
5,000,000 Unlisted options \$0.05, expiry 1 July 2027

Market Capitalisation @ 0.9c/share: ~\$4.2m

Cash balance: ~\$0.35m\*

Debt : \$0.0m

## Major shareholders:

Mark Stowell and Associates 6.2% (Chairman)

\* Subject to shareholder approval at an upcoming General Meeting



# Kula Board and Team



ASX / **KGD**



**Mark Stowell**  
BBus, CA  
Chairman

The founding Chairman of Mawson West Ltd, a copper producer and explorer which completed an IPO on the Toronto Stock Exchange in one of the largest base metal IPO's of 2011. He was a founder and Non-Executive Director of Incremental Petroleum Limited, and Anvil Mining Ltd. Currently a Director of Southern Hemisphere Ltd and Sentinel Exploration Ltd



**Mark Bojanjac**  
BCom, CA  
Director

A founding director of Gilt-Edged Mining Limited which discovered one of Australia's highest grade gold mines and managing director of an unlisted public company which successfully developed and financed a 2.4Moz gold resource in Mongolia. He was previously CEO of Adamus Resources Limited. Currently a Director of PolarX Limited and Metallica Minerals Limited



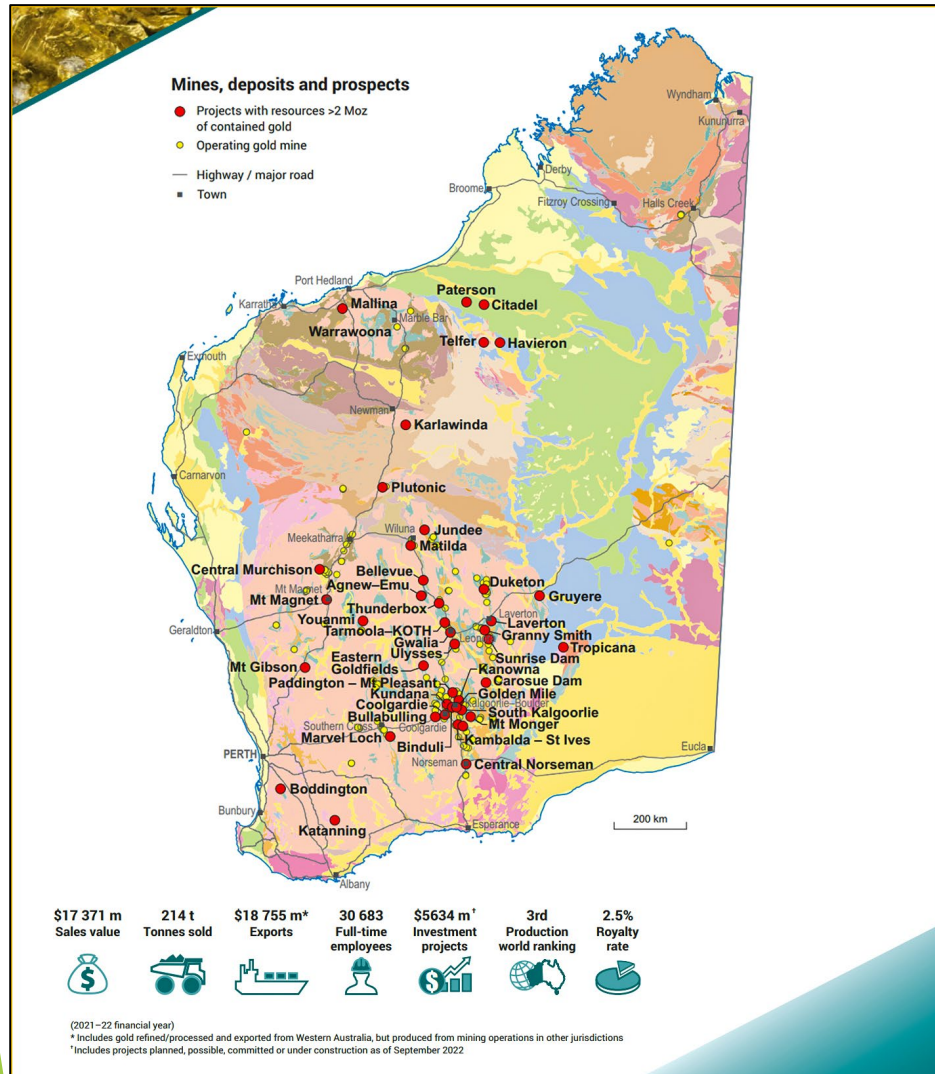
**Ric Dawson**  
B.App.Sc (Geo.) MBA, MAusIMM, MAICD  
Managing Director

Experienced geologist and senior executive manager in multiple ASX entities, founding Managing Director of Prosperity Resources Ltd, inaugural Managing Director of Altech Ltd (formerly AMMG Ltd). Experienced in developing projects from tenement applications to resources, concepts to products.

# Western Australia - World Class Gold Region



ASX / KGD



## Gold resources ranked by contained gold >2.4 million ounces

Resources estimated according to JORC 2012

Project	Status	Owner	Resources (Mt)	Av. grade Au (g/t)	Contained Au (Moz)	Resource date
Golden Mile	Operating	Northern Star	546.0	1.56	27.45	31/03/2022
Mallina Gold <sup>1</sup>	Exploration	De Grey Mining	250.6	1.30	10.64	31/05/2022
Granny Smith <sup>2</sup>	Operating	Gold Fields	44.5	5.67	8.13	31/12/2021
Gwalia	Operating	St Barbara	69.1	3.36	7.53	27/07/2022
Gruyere JV	Operating	Gold Road / Gold Fields	169.6	1.35	7.40	31/12/2021
Tropicana	Operating	AngloGold Ashanti / Regis	126.1	1.73	7.02	31/12/2021
Murchison <sup>3</sup>	Operating	Westgold Resources	91.2	2.19	6.55	01/09/2022
Paterson	Exploration	Rio Tinto	608.0	0.30	5.97	31/12/2021
Plutonic <sup>4</sup>	Operating	Superior Gold	49.5	3.70	5.92	31/12/2021
Carosue Dam <sup>5</sup>	Operating	Northern Star	99.0	1.99	6.38	31/03/2022
Matilda	Operating	Wiluna Mining	78.4	2.19	5.54	30/06/2021
Haverton	Under development	Greatland Gold / Newcrest	92.0	1.86	5.52	03/03/2022
Jundee	Operating	Northern Star	62.0	2.71	5.42	30/03/2022
Duketon	Operating	Regis Resources	167.0	0.95	5.12	08/06/2022
Kundada/Mungari	Operating	Evolution Mining	76.0	2.00	4.91	31/12/2021
Kambalda - St Ives <sup>4</sup>	Operating	Gold Fields	37.3	4.07	4.89	31/12/2021
Boddington	Operating	Newmont	280.0	0.54	4.84	31/12/2021
Central Norseman	Exploration	Tulla Resources / Pantoro	46.4	3.21	4.81	01/08/2022
Tarmoola - King of the Hills	Operating	Red 5	105.5	1.40	4.77	30/06/2022
Telfer <sup>6</sup>	Operating	Newcrest Mining	148.4	0.96	4.60	30/06/2022
Sunrise Dam	Operating	AngloGold Ashanti	73.6	1.94	4.60	31/12/2021
Thunderbox	Operating	Northern Star	84.3	1.65	4.50	31/03/2022
Paddington - Mt Pleasant	Operating	Norton Gold Fields	60.0	2.25	4.36	31/12/2014
Marvel Loch	Operating	Barro Gold Mining	30.6	4.25	4.20	25/07/2016
Laverton	Pre-feasibility	Focus Minerals	64.4	1.80	3.75	05/05/2022
Mt Magnet	Operating	Ramelius Resources	66.3	1.66	3.56	26/10/2022
Agnew-Emu <sup>4</sup>	Operating	Gold Fields	19.9	5.34	3.43	31/12/2021
Bullabulling	Exploration	Norton Gold Fields	95.4	1.05	3.22	31/12/2014
Youanmi Gold	Exploration	Venus Metals / Rox Resources	27.9	3.56	3.21	20/04/2022
Bellevue	Under development	Bellevue Gold	9.9	9.89	3.14	04/05/2022
Mt Monger	Operating	Silver Lake Resources	25.3	3.78	3.09	30/06/2022
Kanowna	Operating	Northern Star Resources	37.8	2.48	3.04	31/03/2021
Mt Gibson	Proposed	Capricorn Metals	104.9	0.84	2.86	07/11/2022
Coolgardie	Pre-feasibility	Focus Minerals	42.1	1.92	2.61	05/08/2022
South Kalgoorlie	Operating	Northern Star Resources	25.1	3.11	2.51	31/03/2022
Citadel	Exploration	Antipa Minerals / Rio Tinto	108.1	0.71	2.48	17/05/2021

Resource estimates have been rounded  
<sup>1</sup> Resource estimates are not JORC 2012 compliant  
<sup>2</sup> Comprises the Mallina Gold and Pilbara Gold Projects  
<sup>3</sup> Comprises the Central Murchison and Murchison Projects  
<sup>4</sup> Comprises the Carosue Dam, Deep South and Porphyry Projects  
 Spatial and resource estimates data sourced from WA Mines and Mineral Deposit database (MINEDEX)

■ Archean hosted    ■ Proterozoic hosted



Government of Western Australia  
 Department of Mines, Industry Regulation and Safety

December 2022

Geological Survey of  
 Western Australia



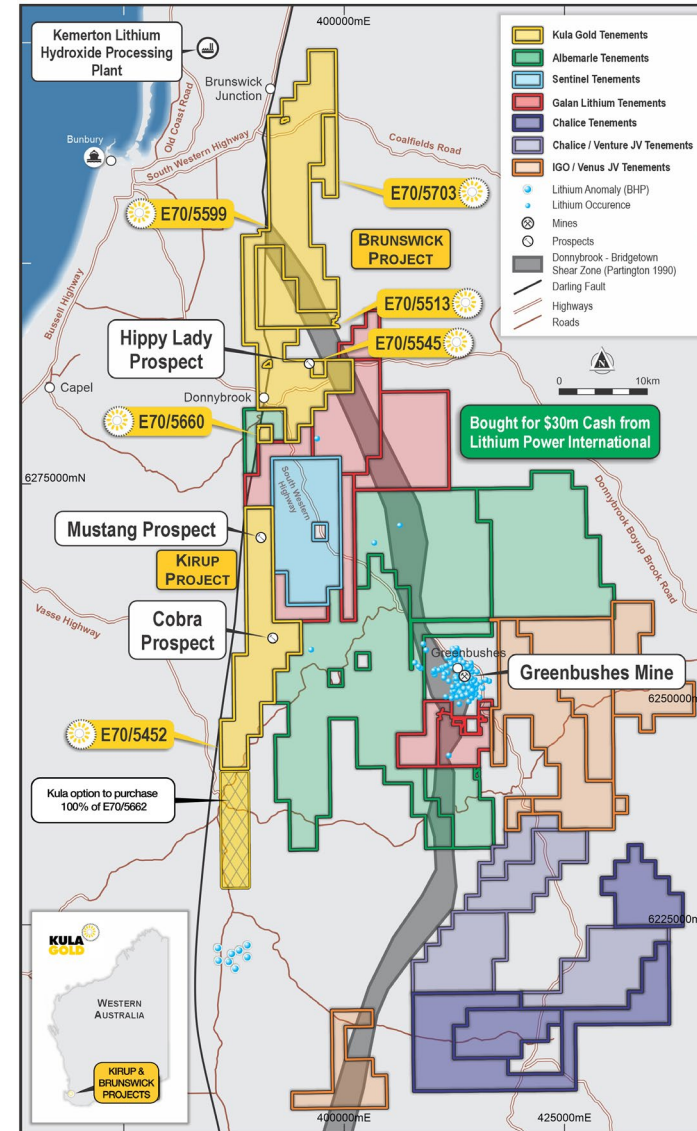
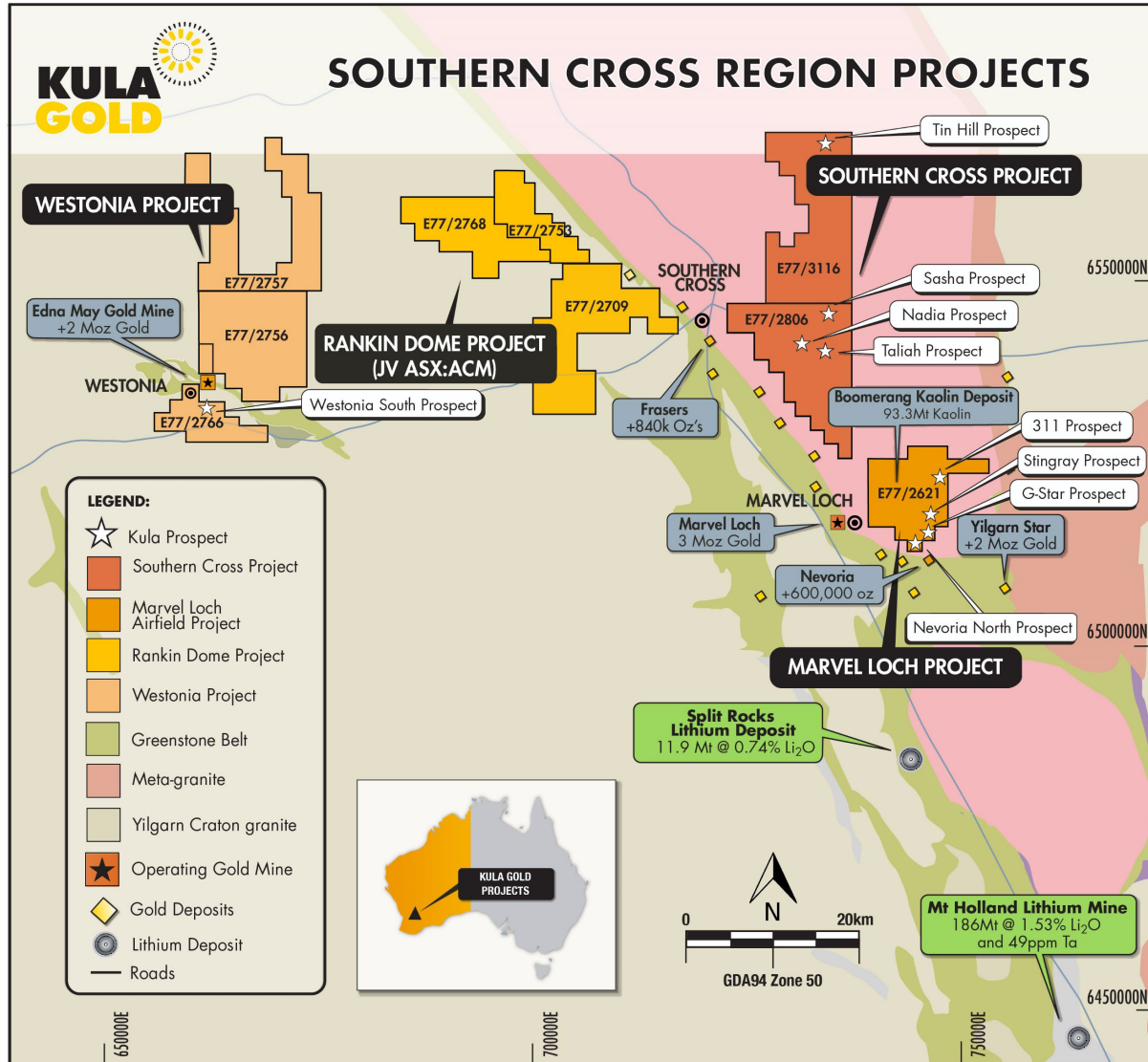
[Link to the full WA Gov PDF](#)

# Projects - Gold and LCT Mineralisation Exploration:

Two Main Focus Areas in 2024



ASX / KGD



# Southern Cross Regional Projects

Gold, Lithium, REE  
and Kaolin Mineralisation

## Marvel Loch Project

1. Boomerang Prospect
2. Stingray
3. Crayfish Prospect
4. Nevoria North

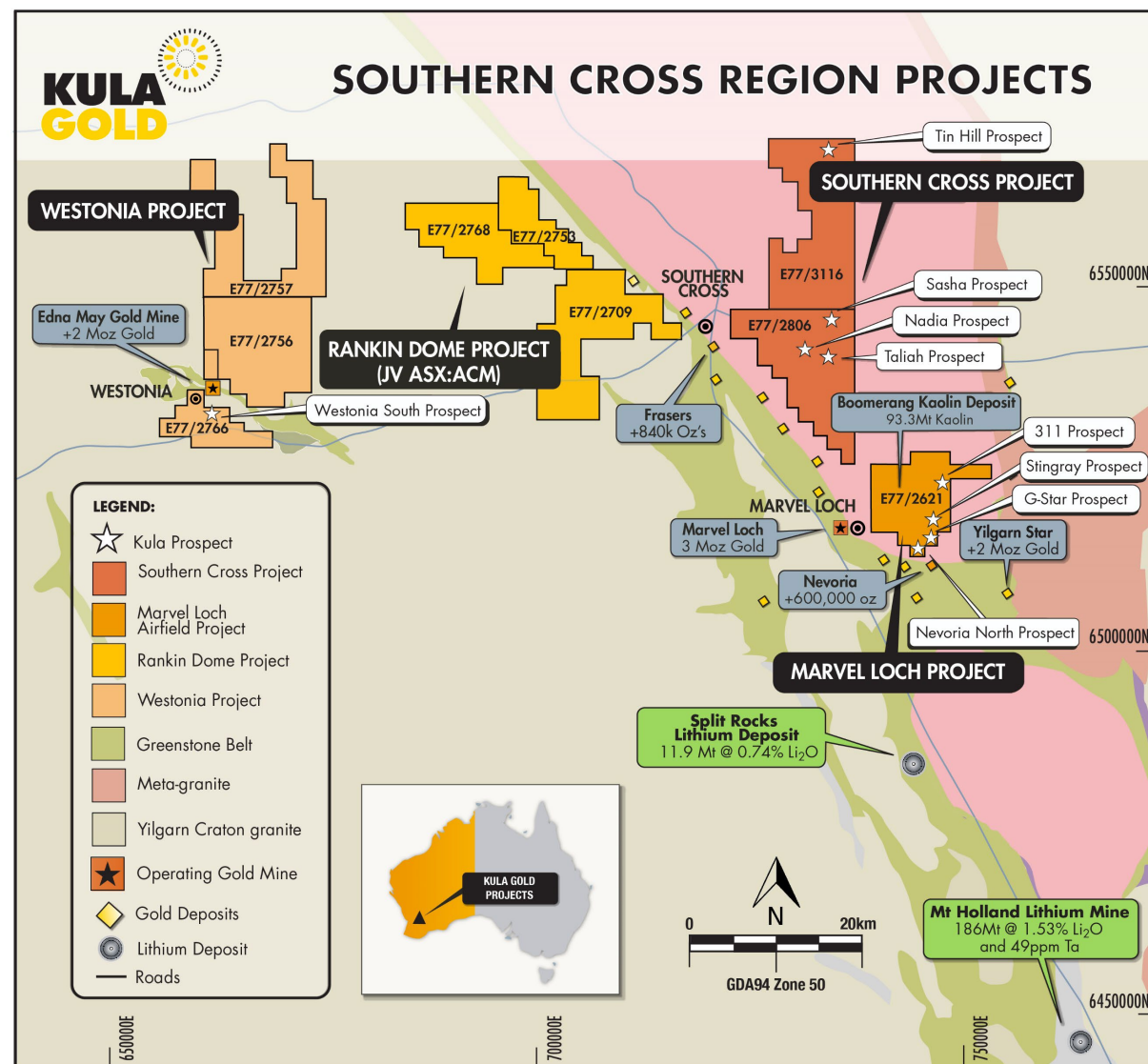
## Southern Cross Project

1. Taliah Prospect
2. Sasha Prospect
3. Nadia Prospect
4. Tin Hill

## Rankin Dome Project

## Westonia Project

~5km from the Marvel  
Loch gold mine and  
infrastructure



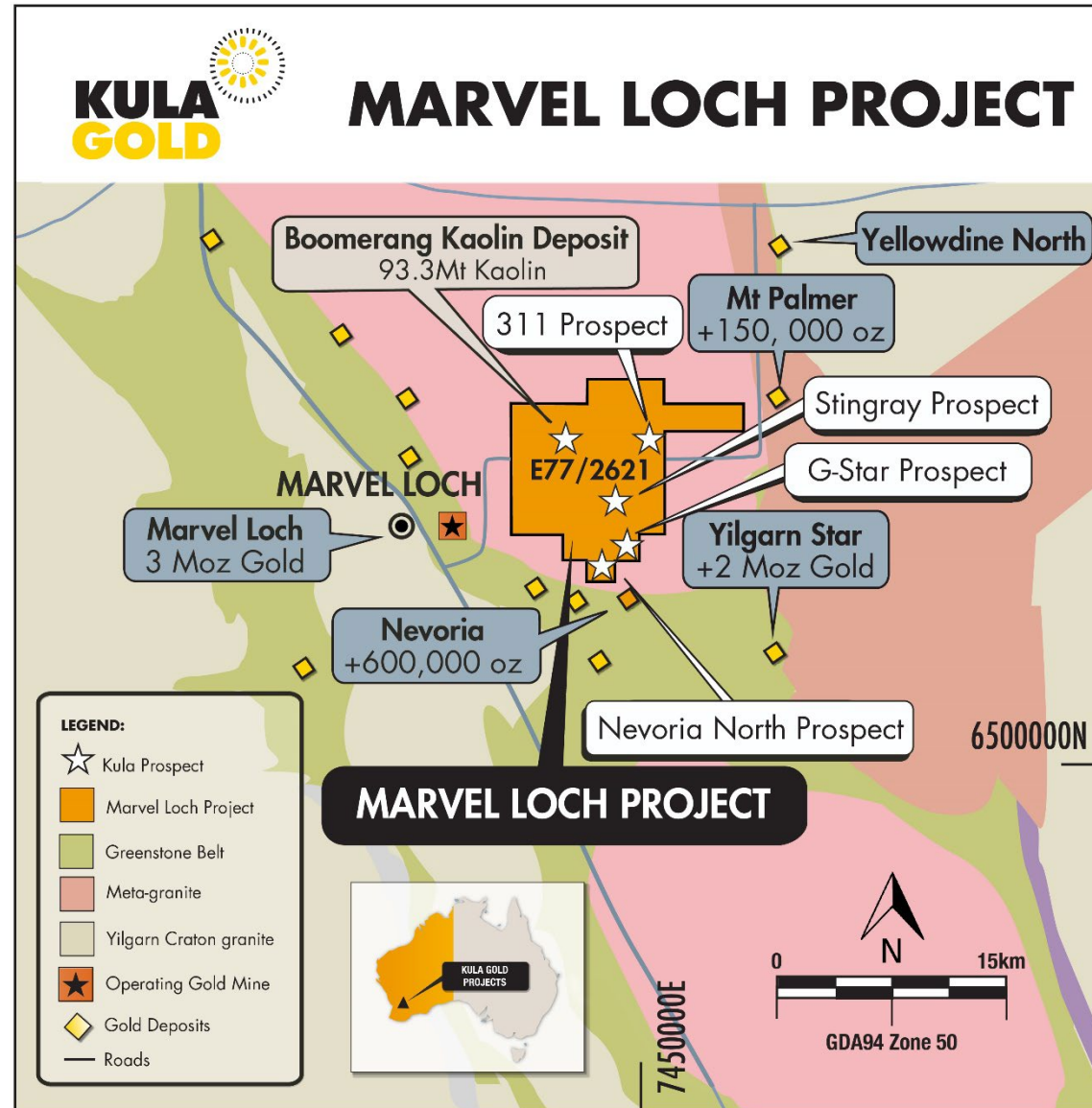
ASX / **KGD**

# Marvel Loch Project

## Gold and Kaolin Mineralisation

### Prospects

1. Boomerang
2. Stingray
3. Crayfish
4. G-Star
5. Nevoria North
6. 311



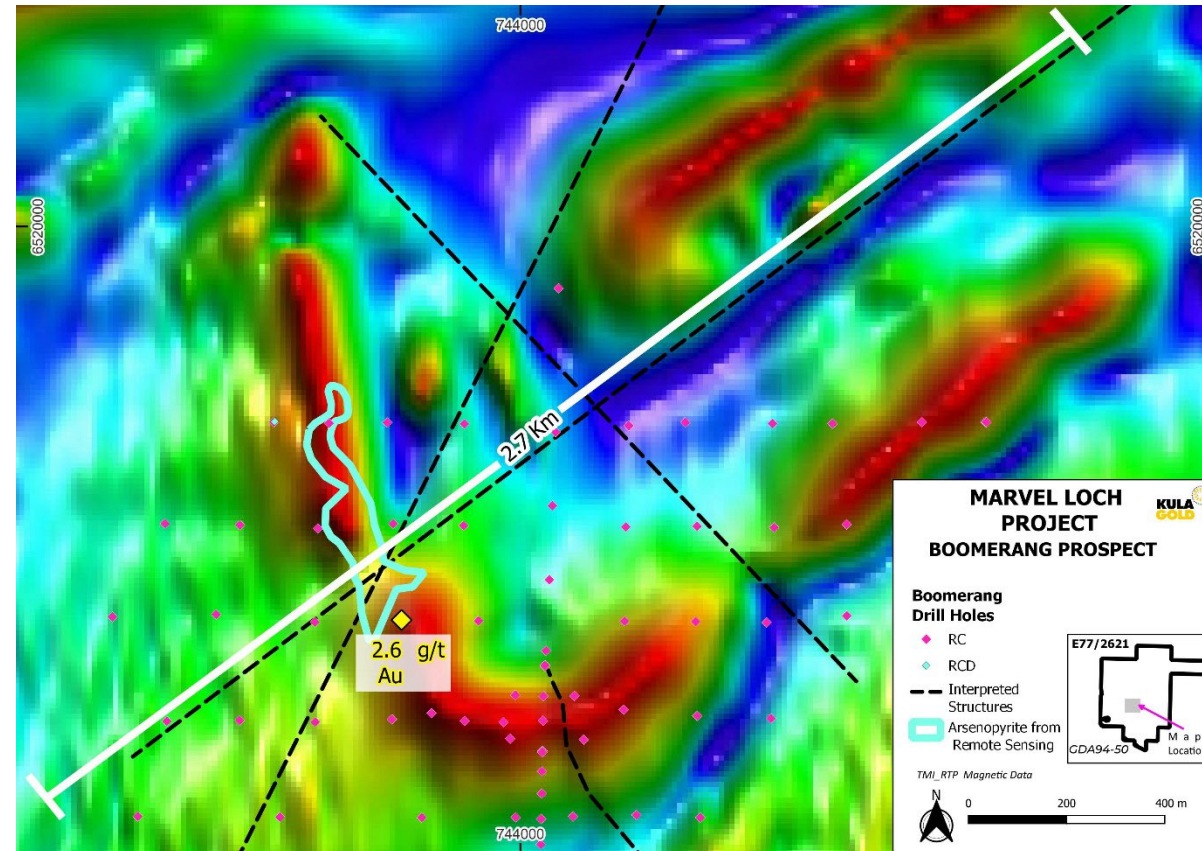
The high-grade 15 g/t ROM Mt Palmer Gold Mine is ~12km to the east



# Marvel Loch Project

## Boomerang Gold Prospect

- Coincident arsenopyrite satellite imagery and interpreted magnetic structure anomaly
- Historical RC drill intercept:  
1m @ 2.6 g/t gold (Au)  
from 54m
- Infill UFF soil programme complete
- Pending results

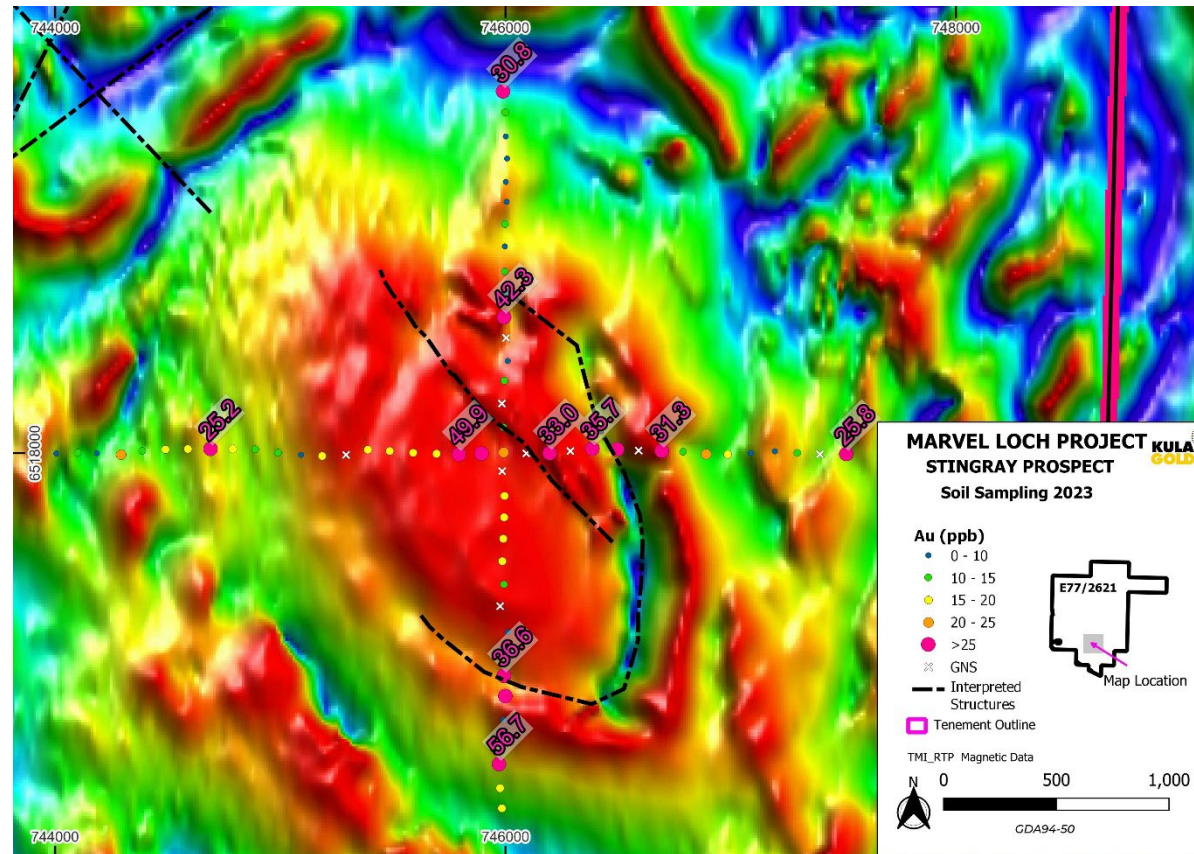


**Boomerang Kaolin Deposit 93.3Mt**  
Indicated and Inferred JORC Resource - July 2022

# Marvel Loch Project

## Stingray Gold Prospect

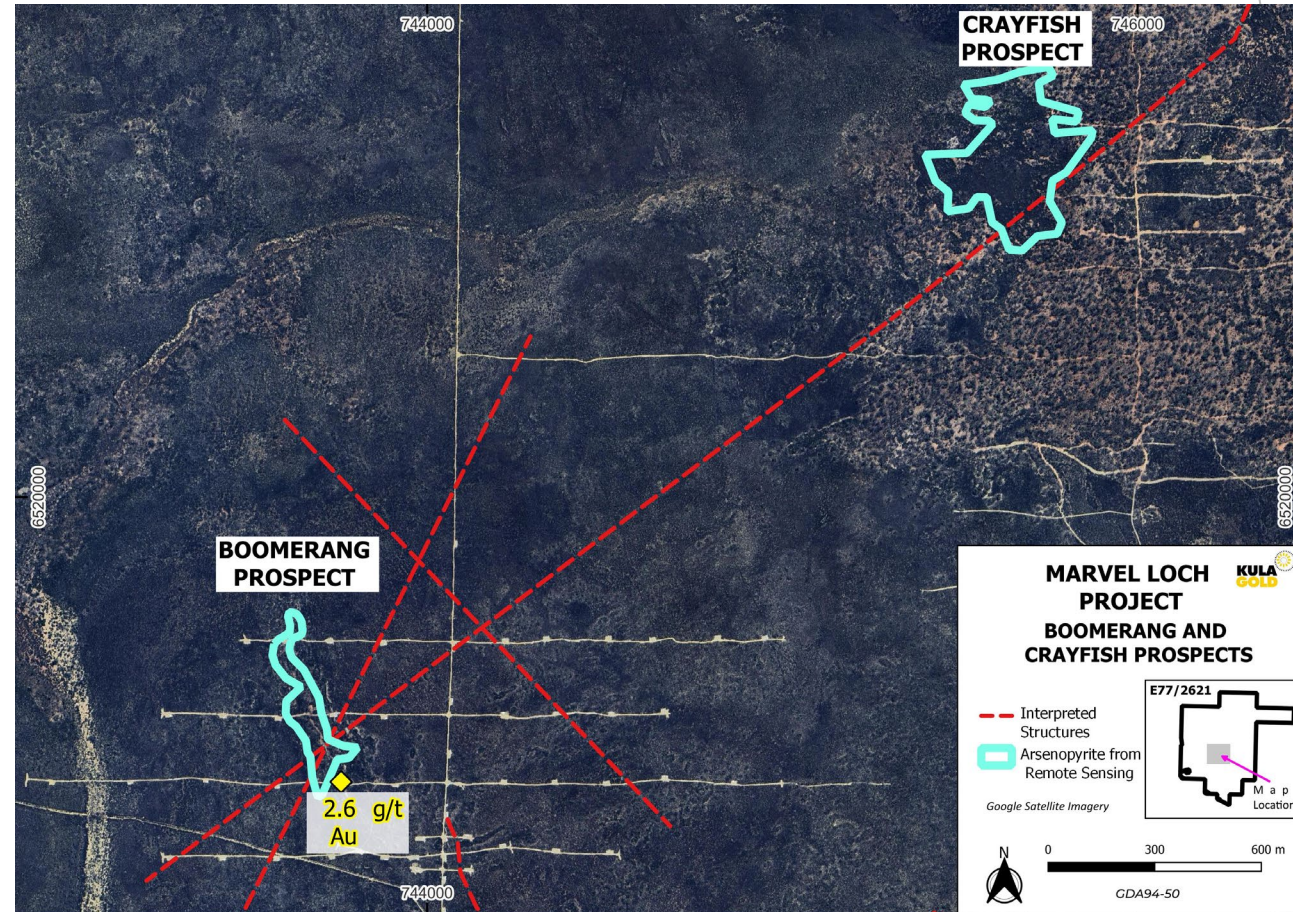
- Large interpreted magnetic structure - a pleasant gold surprise from REE exploration model
- Promising first pass UFF soil programme, significant 20-40X background
- Second phase UFF soil programme recently completed
- Pending results



# Marvel Loch Project

## Crayfish Gold Prospect

- Historical Auger and RC drilling stopped short of our new anomaly target
- Coincident arsenopyrite satellite and interpreted magnetic structure
- UFF soil programme complete
- Pending results



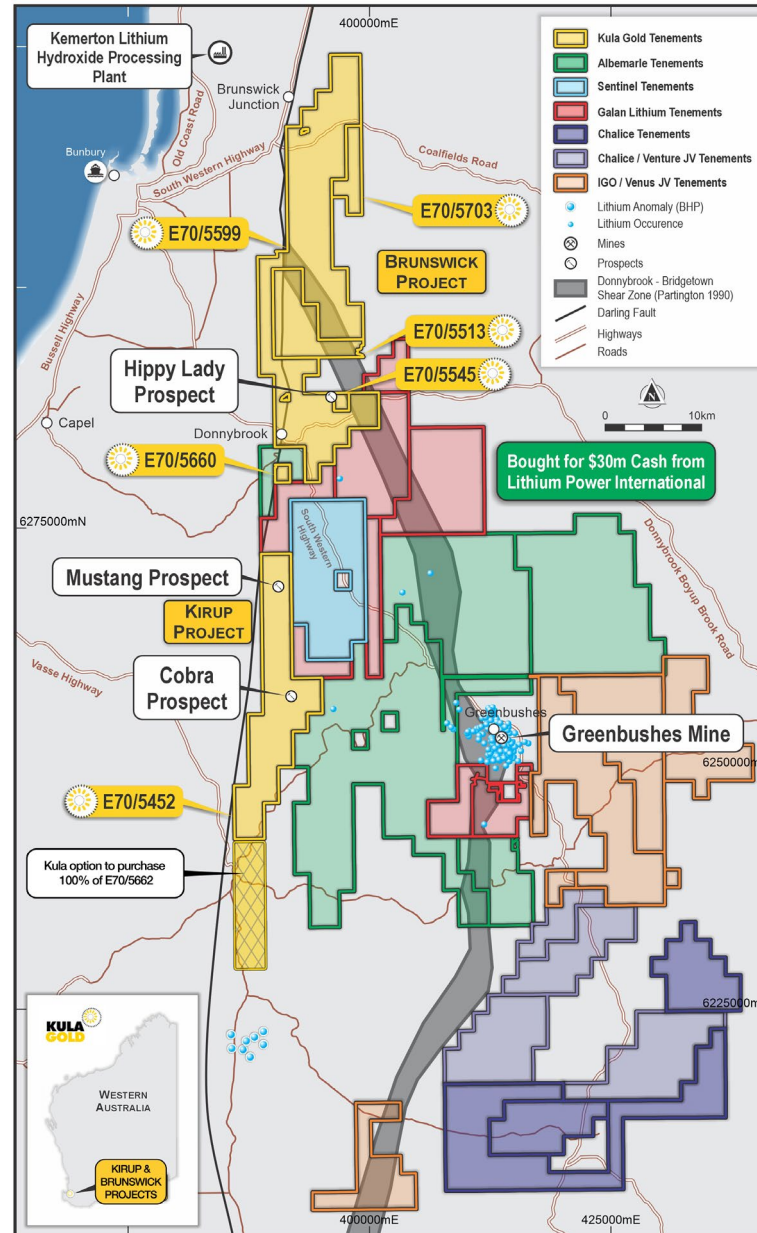
Southern Cross Goldfields have historically had arsenopyrite associated with gold mineralisation

# Projects - Gold and LCT Mineralisation Exploration:

Focus Areas 2024

## Brunswick and Kirup Projects

1. Mustang Prospect
2. Falcon Prospect
3. Hippy Lady Prospect
4. Thunderbird Prospect



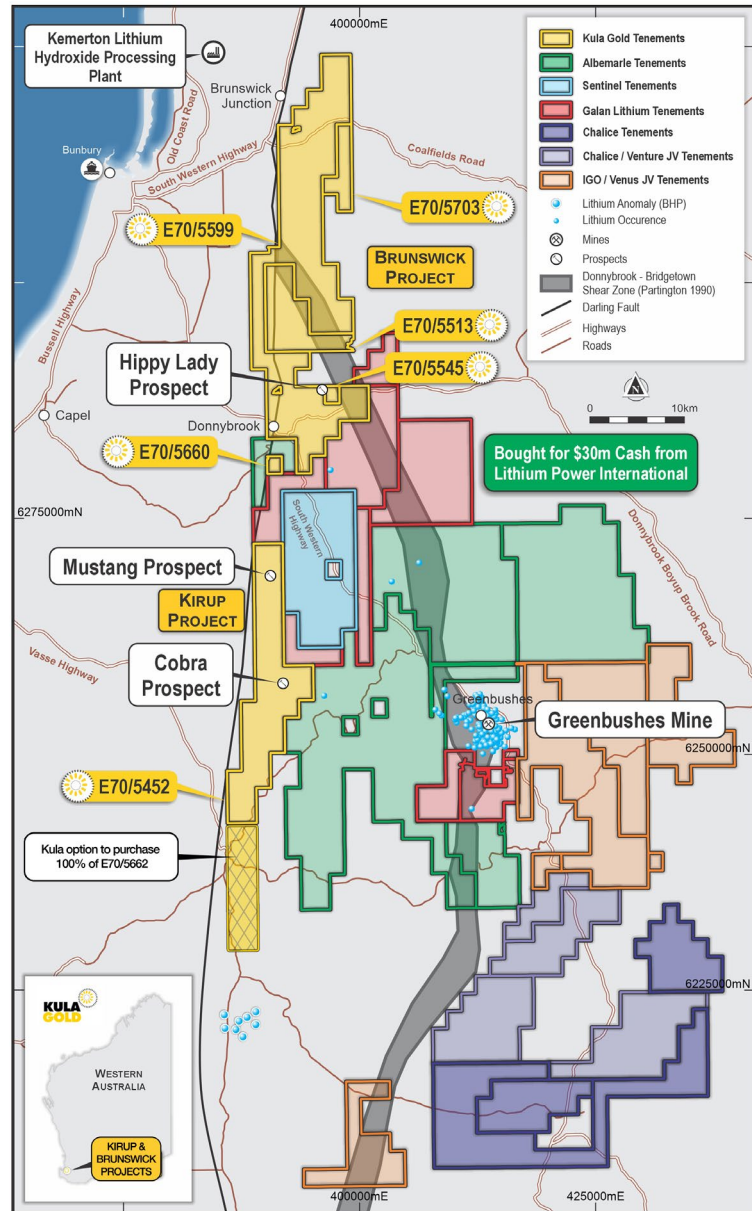
ASX / **KGD**

Near the Greenbushes Lithium Mine and existing infrastructure

# Kirup Project - Gold and LCT Mineralisation Exploration



ASX / **KGD**



## Kirup Project

(70% Kula, 30% Sentinel)

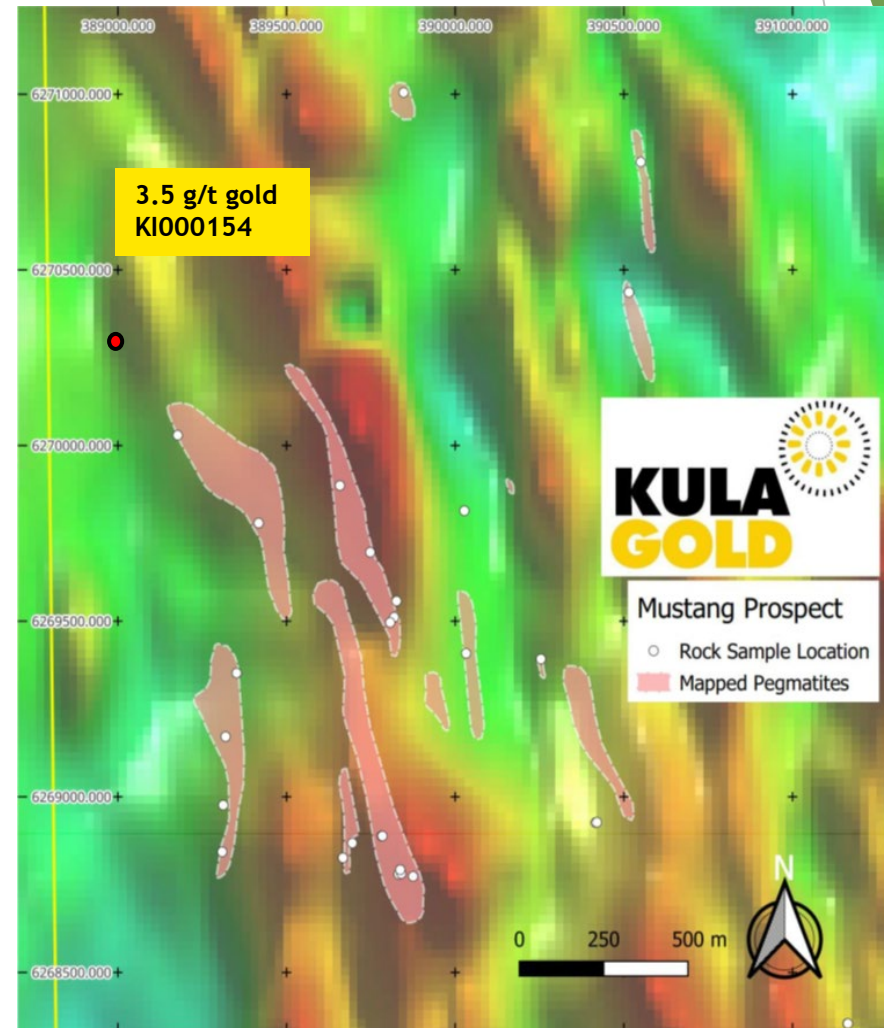
1. Mustang Prospect
2. Falcon Prospect
3. Thunderbird Prospect

This region has significant major companies focusing their attention on gold, copper and lithium potential

# Kirup Project

## Mustang Prospect - Gold and LCT Mineralisation

- Reconnaissance mapping, rock chipping sampling of outcrop and soil sampling to follow up the 3.5g/t gold (Au) along a series of magnetic structures of up to 2km long.
- The Mustang Prospect in an area of NNW trending magnetic lineaments, comprises a series of NNW striking pegmatitic bodies that occur within intercalated felsic gneiss, epithermal veins and amphibolite sequences.



# Mustang Gold Prospect - Examples of Epithermal Rock Textures

- Awaiting on assay results

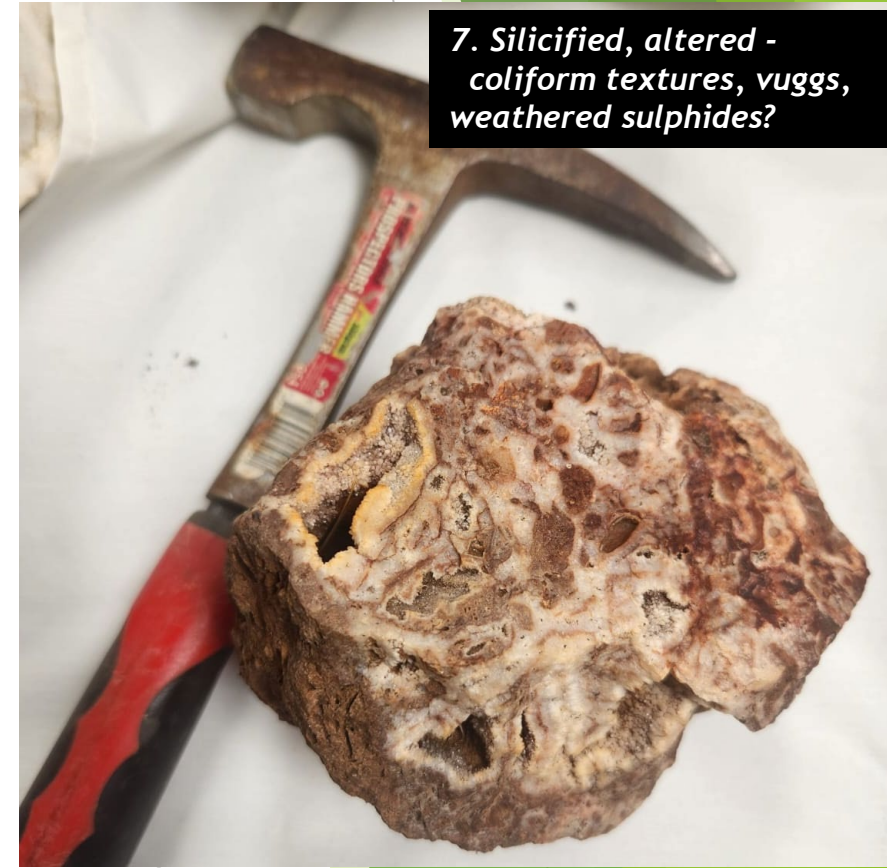
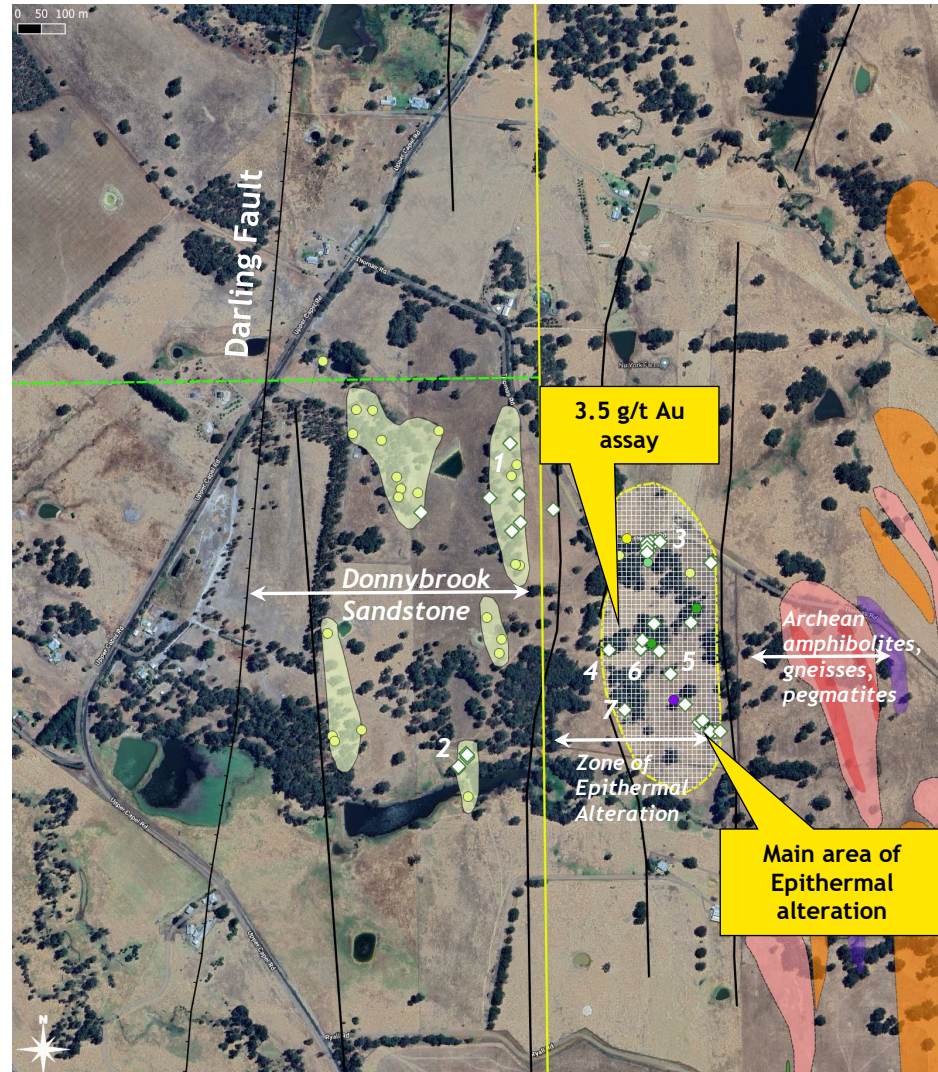
7. Silicified, altered - coliform textures, vugs, weathered sulphides?



1. Extensive quartz veining within sandstones



3. Coliform, chalcedonic quartz alteration, weathered sulphides?



# Western Australia - World Class Lithium Region



ASX / **KGD**



## Lithium resources ranked by contained Li<sub>2</sub>O (kt)

Resources estimated according to JORC 2012

Project	Status	Owner	Resources (Mt)	Av. grade Li <sub>2</sub> O (%)	Contained Li <sub>2</sub> O (kt)	Resource date
Greenbushes	Operating	Albemarle / Tianqi Lithium / IGO	360.2	1.54	5 554	31/08/2021
Pilgangoora	Operating	Pilbara Minerals	305.0	1.18	3 599	30/06/2022
Wodgina	Operating	Albemarle / Mineral Resources	259.2	1.17	3 032	30/06/2022
Mt Holland	Under development	Sociedad Química Y Minera De Chile S.A. / Wesfarmers	189.0	1.50	2 843	19/03/2018
Kathleen Valley	Under development	Liontown Resources	156.0	1.35	2 100	31/03/2021
Mt Marion	Operating	Ganfeng Lithium Company / Mineral Resources	51.4	1.45	744	30/06/2022
Manna	Exploration	Global Lithium Resources	32.7	1.00	328	15/12/2022
Bald Hill*	Operating	Lithco No. 2 Pty Ltd	26.5	0.97	256	30/04/2018
Marble Bar Lithium Project (MBLP)	Exploration	Global Lithium Resources	18.0	1.00	180	15/12/2022
Mt Cattlin	Operating	Allkem	13.3	1.21	161	25/08/2022
Mt Ida Lithium	Exploration	Red Dirt Metals	12.7	1.15	147	19/10/2022
Buldanía	Exploration	Liontown Resources	15.0	0.97	145	08/11/2019
Dome North	Exploration	Essential Metals	11.1	1.15	128	20/12/2022
Niobe	Exploration	Aldoro Resources	4.6	0.07	3	12/10/2022
<b>TOTAL</b>			<b>1454.8</b>		<b>19 220</b>	

Resource estimates have been rounded  
All Mineral Resources are pegmatite-hosted mineralization  
\* Mineral Resource pre-dates production  
Spatial and resource estimates data sourced from WA Mines and Mineral Deposit database (MINEDEX)



[Link to the full WA Gov PDF](#)



# Kirup Project

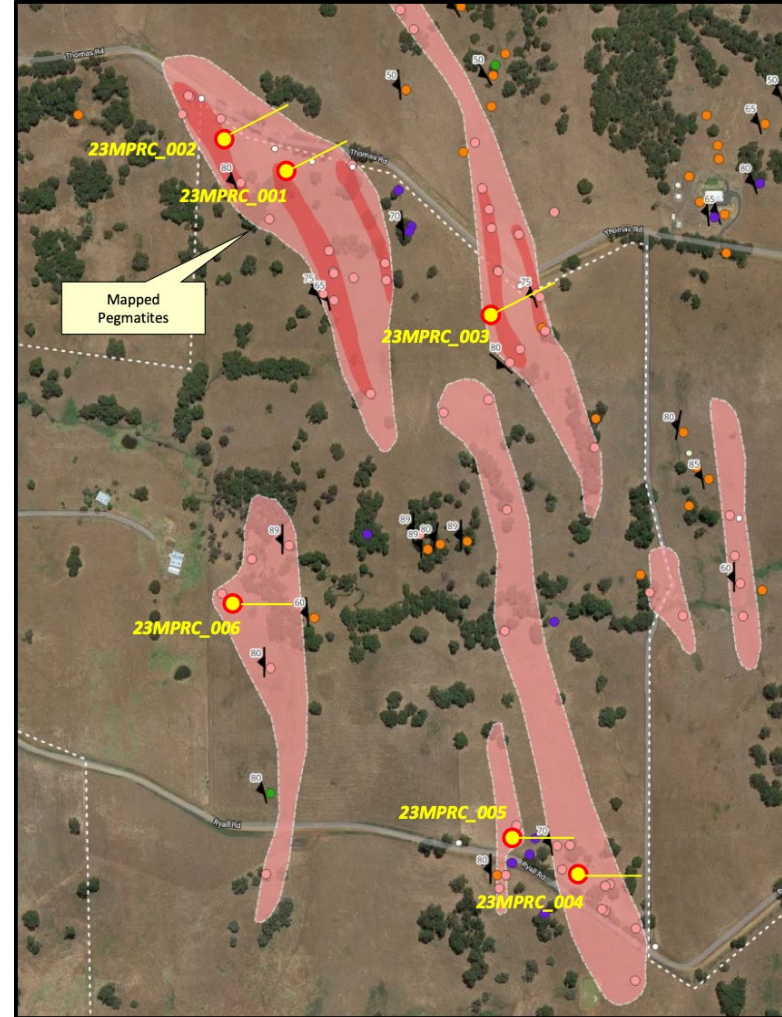
## Mustang Lithium Prospect

Complete Proposed Drilling Programme (subject to change)

- Proposed locations to finish ~800m RC drilling programme
- Hole 23MPRC\_003 drilled
- RC drilling programme designed to delineate main pegmatite bodies, and evaluate lithium potential at depth: complete 5 holes drilled to 120-200 m (total x holes ~ 600m - 1000m)
- Holes 1-2 planned to be drilled @ 60 degrees > 070 to maximize penetration of pegmatites at depth (pegmatites in area strike ~ 160 and dip steeply W): Holes 4-6 drilled @60 deg > 090

Aims of programme:

1. Determine lithium content of pegmatites at depth (as surface analysis is low in lithium due to leaching)
2. Delineate pegmatite strike/dip continuity in the subsurface.

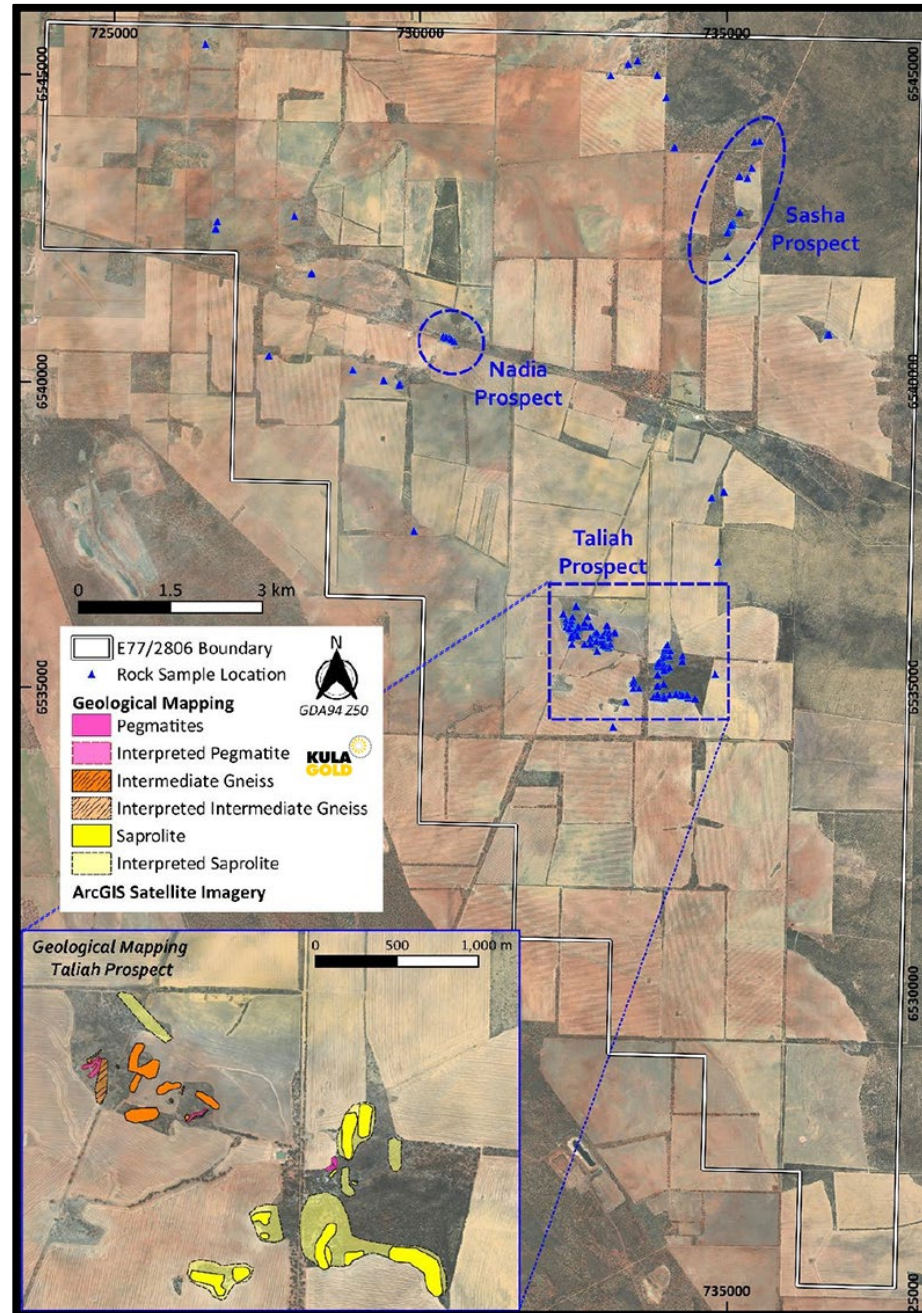


# Southern Cross Project 100%

LCT Mineralisation

- Sasha Prospect
- Taliah Prospect
- Nadia Prospect
- Tin Hill Prospect

90km from the Mount  
Holland hard rock  
lithium mine



# Southern Cross Project

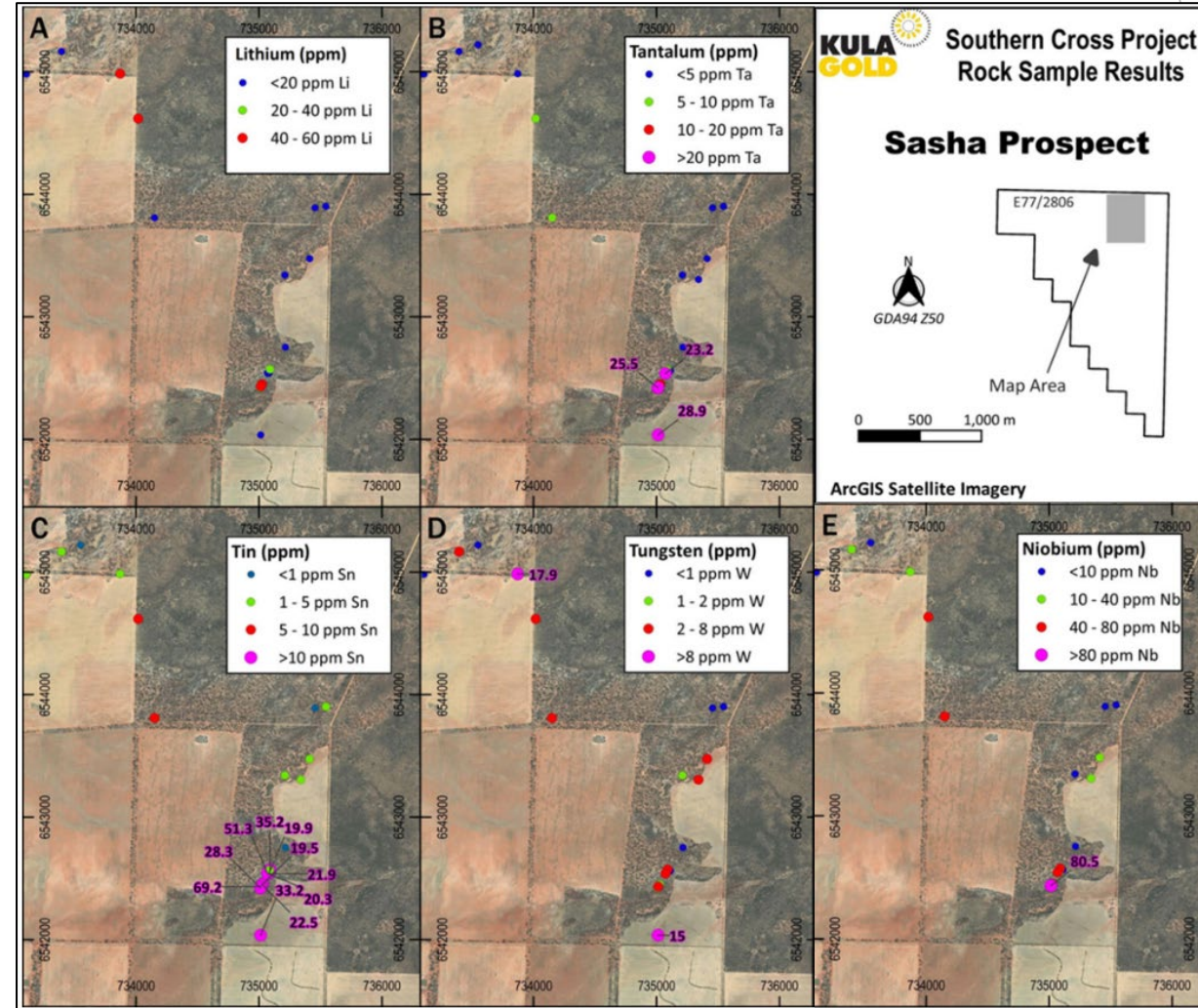
## Sasha Prospect

### LCT Mineralisation



ASX / **KGD**

- Reconnaissance mapping and rock chipping sampling to date has detected anomalous readings up to 58ppm lithium, 28ppm tantalum and 18ppm beryllium.
- Outcropping over 1.8km<sup>2</sup>



# Southern Cross Project

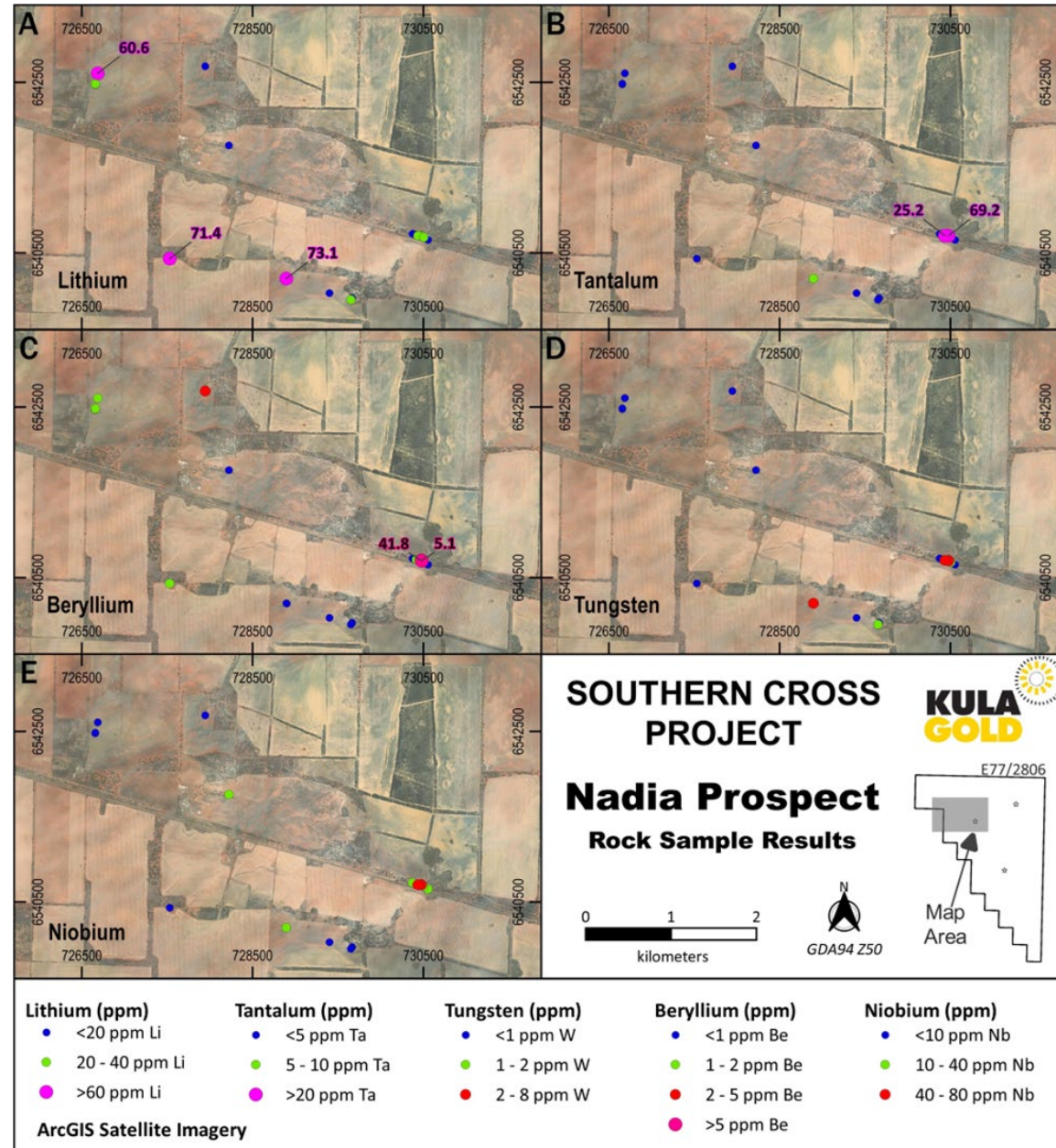
## Nadia Prospect

### LCT Mineralisation



ASX / **KGD**

- Reconnaissance mapping and rock chipping sampling to date has detected anomalous readings of up to 36ppm lithium, 119ppm tantalum and 41ppm beryllium
- Outcropping 600m x 100m



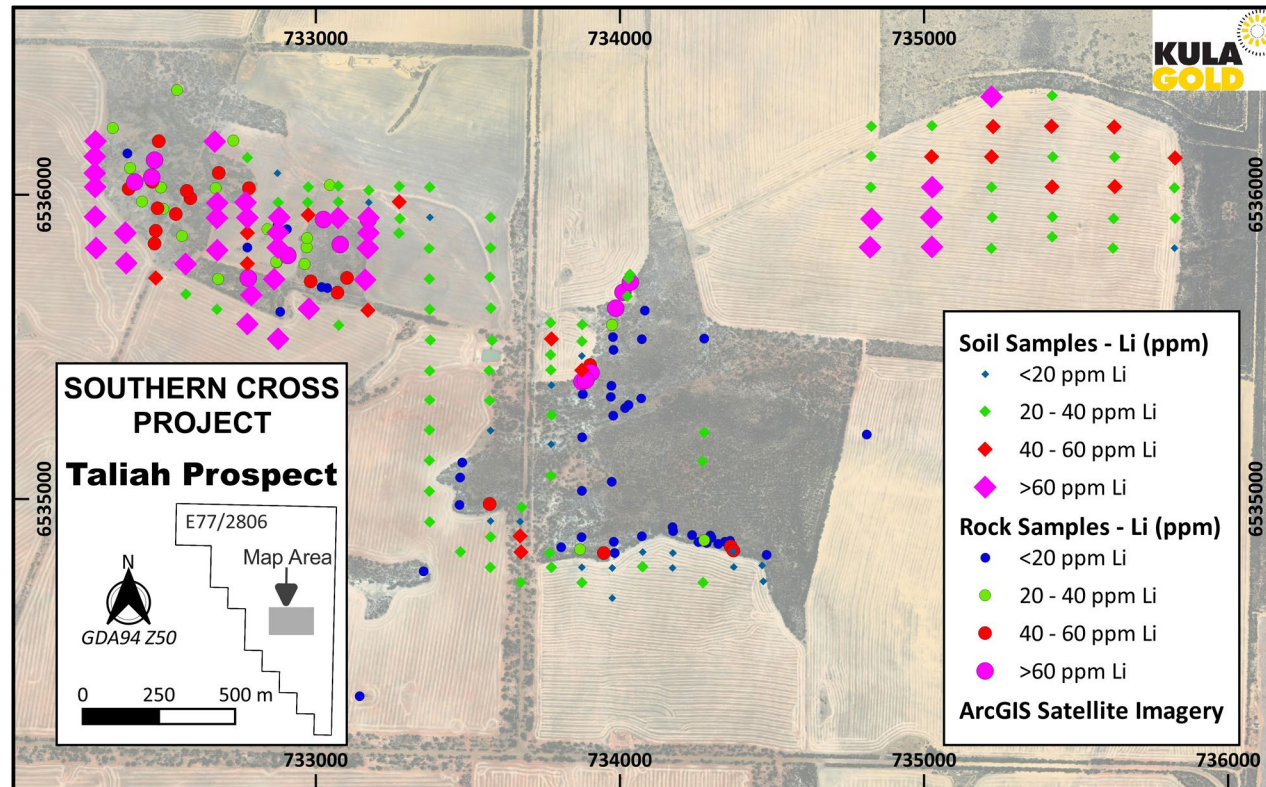
# Southern Cross Project

## Taliah Prospect

### LCT Mineralisation



ASX / **KGD**



Reconnaissance mapping and rock chipping sampling to date has detected anomalous readings up to 214ppm lithium (Li), 144ppm tantalum (Ta), and 300ppm beryllium (Be) along a magnetic structure of up to 4km.

# Southern Cross Project

LCT Mineralisation

Pegmatite Rocks  
RK000098 &  
RK000232



# Rankin Dome Project

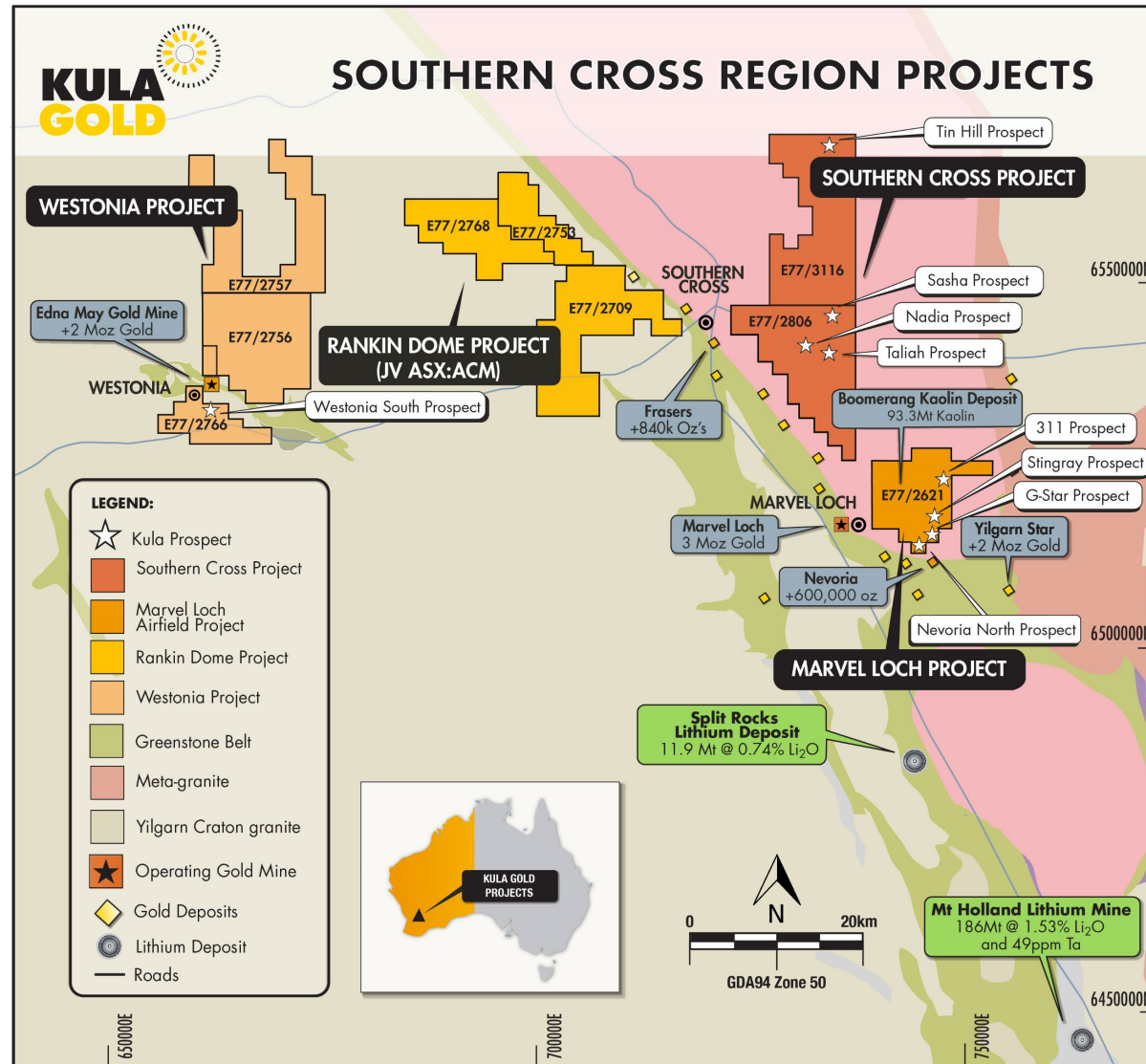
100%, ASX:ACM earning 51%

REE / LCT Mineralisation



ASX / **KGD**

120km from the Mount Holland hard rock lithium mine



# Rankin Dome Project

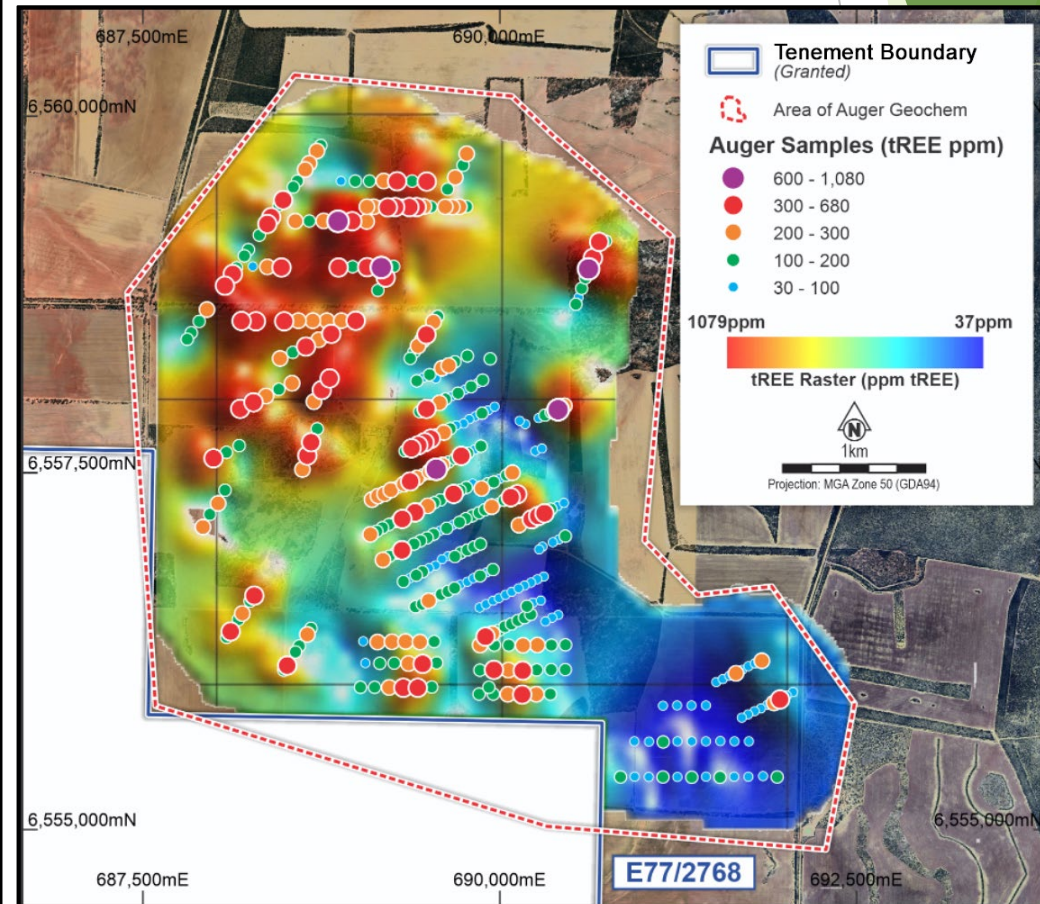
100%, ASX: ACM earning 51%

Rare Earth Elements Mineralisation



ASX / **KGD**

- The Rankin Dome Project, prospective for REE, is in the Youami Terrane near Southern Cross, an established mining centre.
- ACM has completed a positive review of an upcoming drill program planned at Rankin Dome and has undertaken landowner engagement. The planned drilling programs will incorporate Reverse Circulation (RC), aircore and auger drilling to best suit the geomorphology of the various anomalous areas within the large Rankin Dome Project is scheduled in the upcoming Quarter.
  - 74% of samples above 115ppm TREE with a high of 1,080ppm





Thank you for your  
attendance

[www.kulagold.com.au](http://www.kulagold.com.au)